

# Window Drainage Plane™

WDP 5000

## Sub Sill Drainage

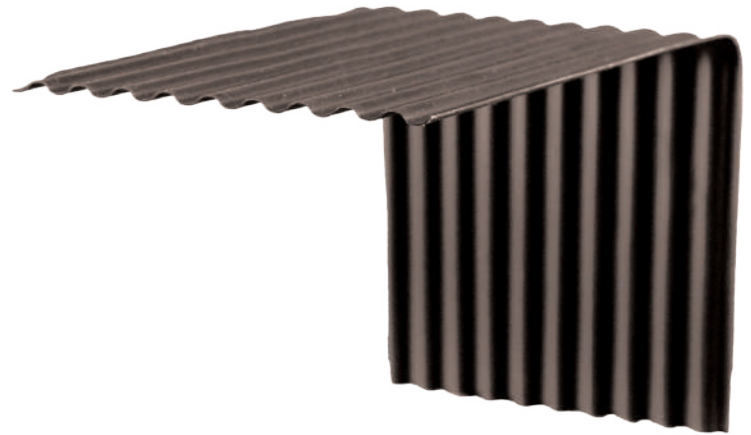
### Applications

- ✔ Stucco, Thin Stone or Brick
- ✔ Natural Stone
- ✔ Full Brick

*The Window Drainage Plane creates an air gap on the flashed window sill*

## Drain Moisture Below Windows

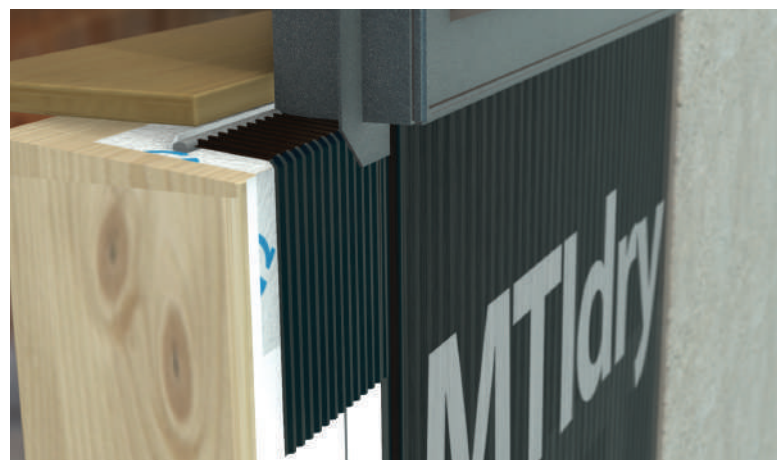
The sub sill region of windows is an especially moisture-sensitive area. MTI's Window Drainage Plane™ allows moisture to escape before it can cause problems.



*Corrugations create a gap for drainage in window sub sill*

## The MTI Advantage

- ✔ Creates a Drainage Plane in the Sub Sill Region of a Rough Opening
- ✔ Rigid & Durable
- ✔ 100% Recycled Content

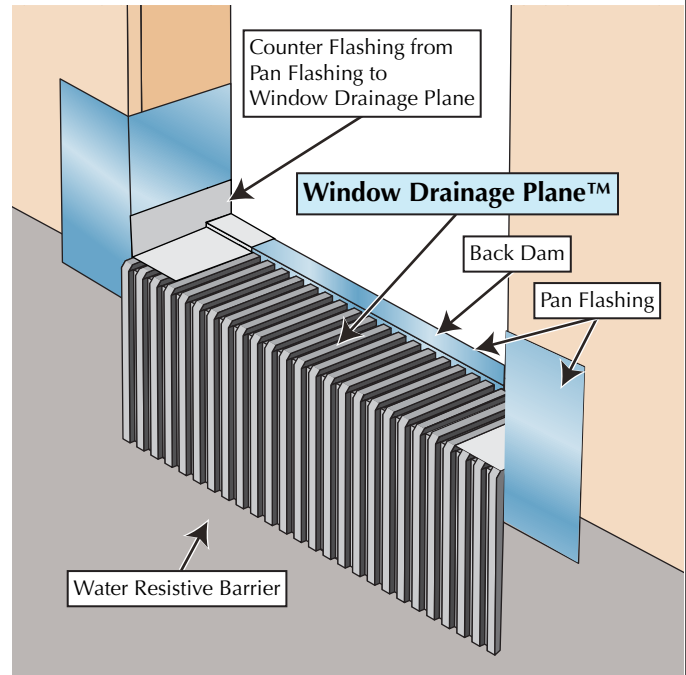


*Drainage channels in window sub sill drain moisture into rainscreen drainage plane*

## Installation

- Prepare bottom of window rough opening with proper slope-to-drain surface
- Cut and place Window Drainage Plane™ on prepared surface at bottom of window; hold in place with dabs of construction adhesive
- Flash window rough opening & install window according to window manufacturer's instructions

Complete Installation at [MTIdry.com/installation](http://MTIdry.com/installation)

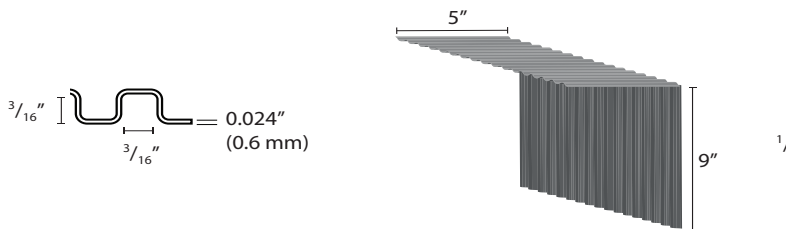


## Technical Information

<b>Material Description</b>	High impact polystyrene sheets, 0.024 inch (0.6 mm) thick, formed with corrugations.		
<b>UV Exposure</b>	Over 9 weeks in accelerated UV testing (ASTM G 154)	<b>Fungi Resistance</b>	Does not support fungal growth (ASTM C 1338)

### Window Drainage Plane

WDP 5000



#### Related Products:

- Sure Cavity™ Rainscreen
- Moisture Diverter™

<b>Piece</b>	4 ft
<b>Bundle</b>	40 ft / 10 pieces
<b>Box</b>	240 ft / 60 pieces

Questions about application, installation or ordering?  
[MTIdry.com/window-drainage-plane](http://MTIdry.com/window-drainage-plane)

**MTI** MASONRY TECHNOLOGY INCORPORATED