

# Floor Edging™

FE 8555

For Dry Basements



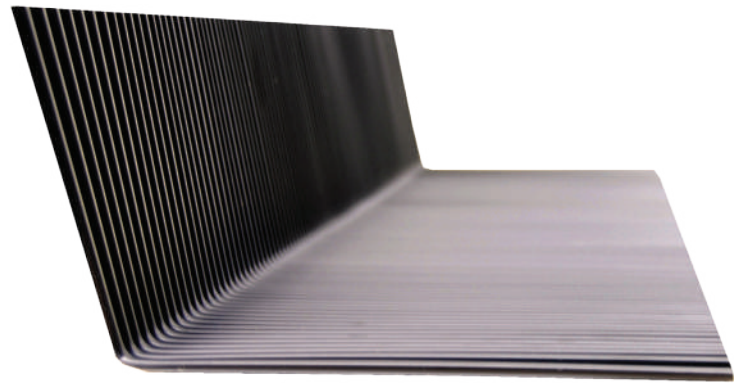
## Applications

- ✔ Interior Below Grade
- ✔ Soffit Ventilation for Brick & Stone

*Floor Edging allows water to pass below the slab to the drain tile & drain field and out through a sump pump*

## Keep Basements Dry With MTI

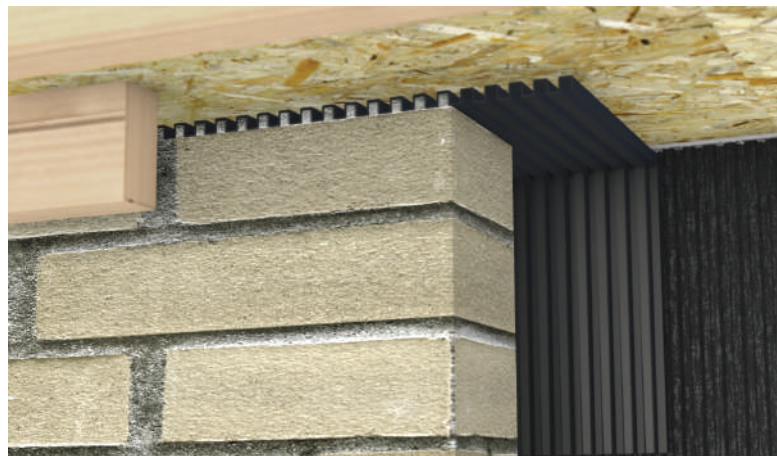
Damp and dreary basement? Transform it into a comfortable living space with MTI's basement systems. Floor Edging separates the floor from walls and footings, creating a path for moisture to pass under the slab and to the drain field & drain tile system.



*4' sections of Floor Edging are easy to install in new & renovated basements*

## The MTI Advantage

- ✔ Prevents Callbacks
- ✔ Foolproof Installation
- ✔ Reduces Shrinkage Cracks
- ✔ Separates Slab from Walls & Substrate to Prevent Moisture & Thermal Transfer
- ✔ Installed in Over 300,000 Basements
- ✔ 100% Recycled Content
- ✔ New Construction & Retrofits



*Floor Edging can be used in brick & stone soffit details to vent the rainscreen air gap*

**MTI** MASONRY TECHNOLOGY INCORPORATED

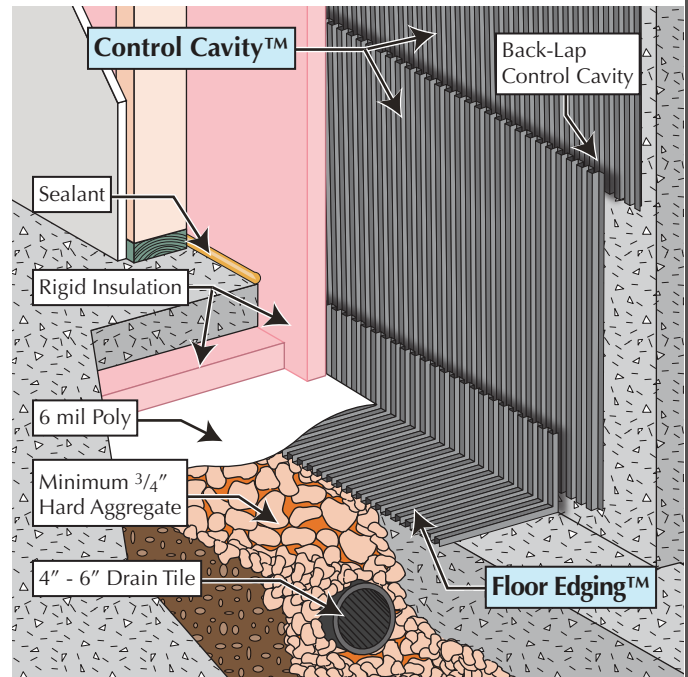
May 2018

Detail Drawings • BIM • Free Consultation • Videos  
[info@mtidry.com](mailto:info@mtidry.com) 800-879-3348 [MTIdry.com](http://MTIdry.com)

## Installation

- Layout Floor Edging™ overlapping ends approximately 2"
- Fabricate inside and outside corners out of Floor Edging with common utility knife
- Select proper floor elevation with story pole or snap chalk line – top edge of Floor Edging must be a minimum of 1" higher than top edge of concrete
- Cover Floor Edging and drain field with poly sheet and pour concrete floor
- For soil gas control use sealant on seams of Floor Edging & Control Cavity (or rigid insulation)

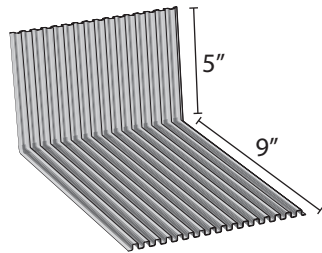
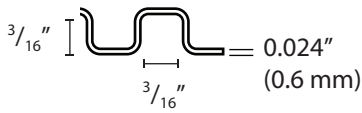
Complete Installation at [MTIdry.com/installation](http://MTIdry.com/installation)



## Technical Information

<b>Material Description</b>	High impact polystyrene sheets, 0.024 inch (0.6 mm) thick, formed with corrugations.		
<b>UV Exposure</b>	Over 9 weeks in accelerated UV testing (ASTM G 154)	<b>Fungi Resistance</b>	Does not support fungal growth (ASTM C 1338)

### Floor Edging FE 8555



#### Related Products:

- Control Cavity™
- Vent Mat™

<b>Piece</b>	4 ft
<b>Bundle</b>	40 ft / 10 pieces
<b>Box</b>	240 ft / 60 pieces
<b>Pallet</b>	2,400 ft / 600 pieces

Questions about application, installation or ordering?  
[MTIdry.com/floor-edging](http://MTIdry.com/floor-edging)