

Corrugated Lath Strip™ White

CLSW 3845-18

Drainage Strip For EIFS



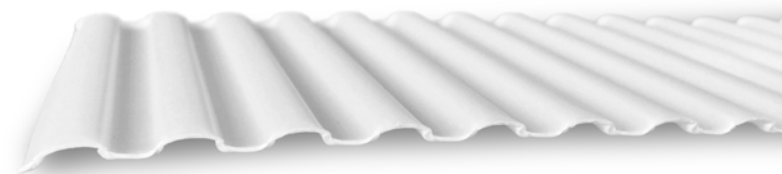
Applications

☑ EIFS

Corrugated Lath Strip protects the drainage gap in water managed EIFS.

An Air Gap Protects You Against Moisture

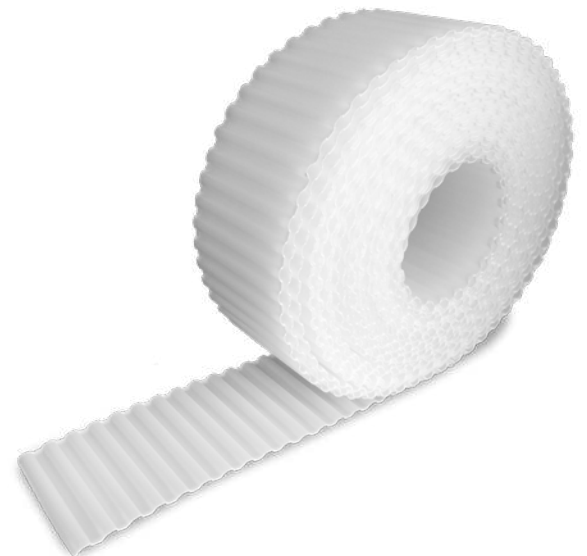
Think exterior rigid foam insulation is a perfect barrier system? Think again. Learn a lesson from the EIFS industry: a drainage gap behind rigid insulation drains the wall and prevents moisture damage. Create a predictable air gap with Corrugated Lath Strip from MTI and stay dry.



Corrugated Lath Strip ensures 1/8" air gap

The MTI Advantage

- ☑ Creates Air Gap
- ☑ Maintains Drainage & Minimizes Thermal Loss Behind EIFS & Rigid Insulation
- ☑ Easy to Install
- ☑ Protects Drainage Gap from Finish Coat

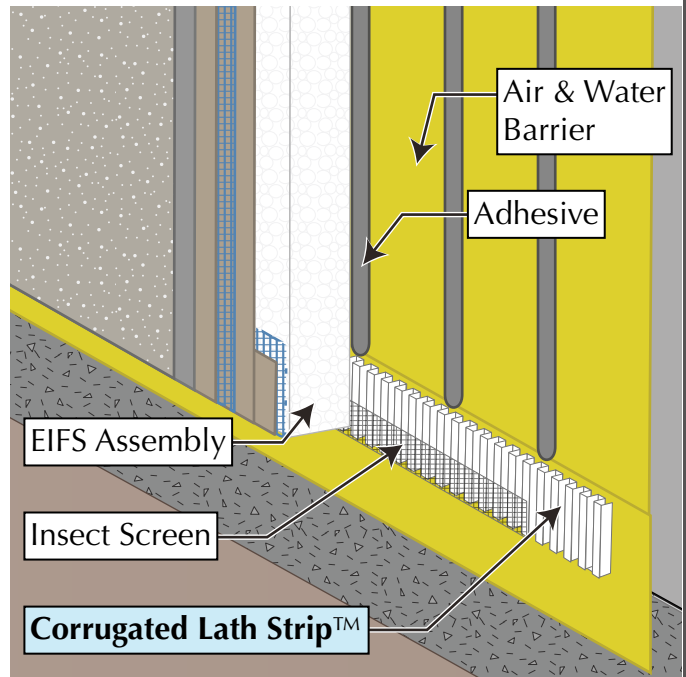


Corrugated Lath Strip is available in 50 ft rolls.

Installation

- Install Corrugated Lath Strip™ White over the water resistive barrier at the base of the wall, window heads and horizontal expansion joints
- Wrap with insect screen
- Fasten with staples or other mechanical fasteners 24" on center
- Corrugated Lath Strip should extend below the EPS foam to protect the drainage gap from being covered by the base and finish coats
- Install EPS foam and EIFS components per manufacturer's instructions

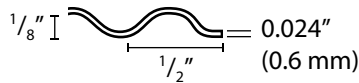
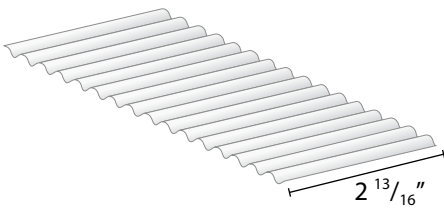
Complete Installation at MTIdry.com/installation



Technical Information

| | | | |
|-----------------------------|--|-------------------------|--|
| Material Description | High impact polystyrene sheets, 0.024 inch (0.6 mm) thick, formed with corrugations. | | |
| UV Exposure | Over 9 weeks in accelerated UV testing (ASTM G 154) | Fungi Resistance | Does not support fungal growth (ASTM C 1338) |

Corrugated Lath Strip White CLSW 3845-18



| | |
|-----------------------------|----------------------|
| Depth (drainage gap) | 1/8 in (3mm) |
| Roll | 50 ft |
| Bundle | 250 ft / 5 rolls |
| Box | 1,500 ft / 6 bundles |
| Pallet | 18,000 ft |

Questions about application, installation or ordering?
MTIdry.com/corrugated-lath-strip