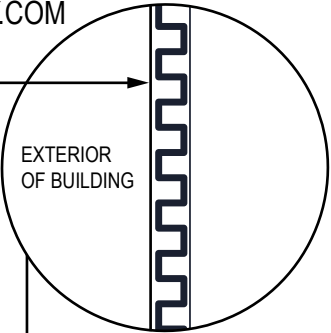


FABRIC TO FACE  
THE WEATHER



MOISTURE DIVERTER™  
MUST EXTEND PAST WINDOW  
MOUNTING FLANGE OR  
WINDOW TRIM BOARDS ON  
BOTH SIDES OF THE WINDOW

SURE CAVITY™  
(SC 5016 OR SC 5032 OR  
SCMM 2516 OR SCMM 2532) OR  
GRAVITY CAVITY™  
(GC 1816 OR GC 1832)

FLASHING TAPE

LAP SURE CAVITY™  
FABRIC OVER MOISTURE  
DIVERTER™

CAULK

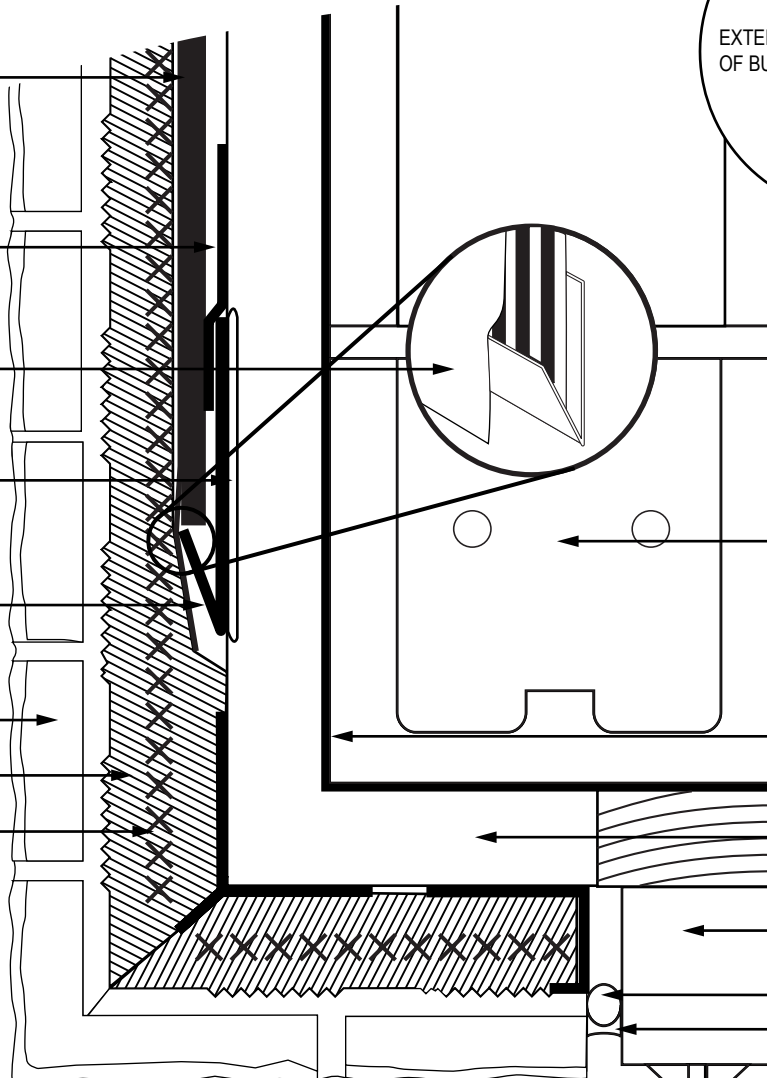
MOISTURE DIVERTER™  
(DS 2858)  
1/4" SLOPE TO DRAIN

THIN STONE VENEER

5/8" TO 3/4" SCRATCH COAT

SELF FURRING  
EXPANDED  
METAL LATH

CHECK LOCAL BUILDING  
CODES BEFORE EXECUTING  
THIS DETAIL



CMU BACKUP WALL

APPLY APPROPRIATE  
MOISTURE RESISTANT  
COATING AS PER LOCAL  
CODE AND CLIMATE  
CONDITIONS

RIGID INSULATION

WINDOW FRAME

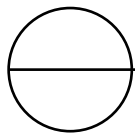
BACKER ROD  
CAULK

INSTALL AND FLASH WINDOW  
AS PER MANUFACTURER'S  
SPECIFICATIONS

**NOTES:**

1. INSTALLATION TO BE COMPLETED IN ACCORDANCE WITH MANUFACTURER'S SPECIFICATIONS.
2. DO NOT SCALE DRAWINGS
3. CONTRACTORS NOTE: FOR PRODUCT AND COMPANY INFORMATION VISIT [WWW.MTIDRY.COM](http://WWW.MTIDRY.COM)

**THIN STONE TO INSET WINDOW WITH MOISTURE  
DIVERTER™ ON INSULATED CMU BACKUP WALL-SIDE VIEW**



SURE CAVITY™ (SC 5016 OR SC 5032) OR 10MM SURE CAVITY™ (SCMM 2516 OR SCMM 2532) OR  
GRAVITY CAVITY™ (GC 1816 OR GC 1832) AND MOISTURE DIVERTER™ (DS 2858)

MTI CAD drawings are created from sources deemed to be reliable. However, MTI does not guarantee the accuracy or completeness of any information, nor shall be held responsible for any errors, omissions, or damages arising out of the use of this information. These drawings are created with the understanding that MTI is providing information but is not attempting to render engineering or other professional service. If such services are required, the assistance of an appropriate profession should be sought. Use MTI materials in strict conformance with local building codes and regulations. Consult local code/code officials prior to installation. It is the buyer's responsibility to ensure that MTI materials are used in strict conformance with local building codes and regulations.